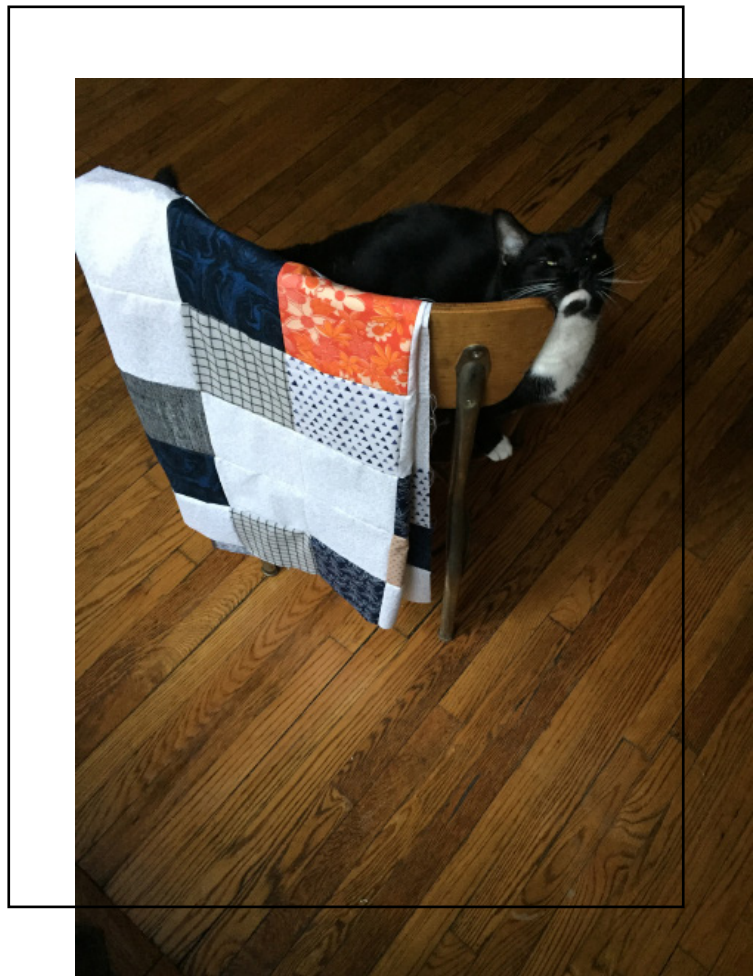


# BROOKLYN KNITFOLK QUILT ALONG

Thanks for your interest in the Brooklyn Knitfolk Quilt Along! This is an information packet that includes the materials list, a fabric buying guide, design inspiration, and coloring planning sheets. Anything underlined means there's a clickable link to a website. If you have any questions about what you're reading, please feel free to email me at [brooklynknitfolk@gmail.com](mailto:brooklynknitfolk@gmail.com) or post your question in the Ravelry group quilt along thread. I'll try to get back to you as soon as possible. Video tutorials will be available on the Brooklyn Knitfolk YouTube channel. Please use the hashtag [#BrooklynKnitfolkQAL](#) to post pics of your projects on Instagram! I LOVE to follow along with what you guys are making!

*As always, thanks so much for your continued support and friendship. It means the world to me.*

xoxo,  
Jaclyn



# BROOKLYN KNITFOLK QUILT ALONG

## materials list

1. Sewing machine
2. Fabric (for online sources, check out [fabric.com](http://fabric.com))
3. Quilt batting (make SURE you're purchasing a size relative to the size you want to make! I typically buy the *Warm & Natural* brand)
4. Thread (2-3 spools depending on the size of the quilt you intend to make)
5. [Rotary cutting set](#)\* (rotary mat, rotary cutter, and clear acrylic ruler)
6. [Fabric scissors](#)
7. Embroidery thread (~5-8 spoolies. I could be way over-estimating here, but better to have too much than not enough and it's inexpensive)
8. [Curved needle](#) (and a regular needle for hand-sewing the binding)
9. [Seam ripper](#)
10. [Pins](#)
11. Pencil
12. Iron and ironing surface
13. [Basting spray](#)

## SOME NICE TO HAVE'S

1. [Extra sewing machine bobbins](#)
2. [Extra sewing machine needles](#) in case of breakage!
3. Quarter-inch presser foot with guide (for your sewing machine) Make sure it's compatible with your sewing machine!
4. OR painters/masking tape (if you don't want to get the presser foot)

*\*Please note you do not \*NEED\* a rotary cutter and mat, but the tutorials will be using them. For a more budget-friendly option, you can use a ruler, pencil, and fabric scissors.*

# BUYING FABRIC

## Planning your quilt and figuring out how much fabric to buy

Before you buy your fabric, you'll need to know (approximately) how big you're making your quilt.

Here are standard measurements, but don't feel like your quilt has to fit exactly within these dimensions. A lot of the time, quilts do not fit a standard size exactly.

- **Crib:** 36 inches x 40 inches
- **Twin:** 68 inches x 89-94 inches
- **Full/ Double:** 84 inches x 89 inches
- **Queen:** 90 inches x 94 inches
- **King:** 106 inches x 94 inches

### HOW MANY BLOCKS DO I NEED?

#### Crib

- 7 blocks across // 8 blocks down
- 56 blocks total

#### Twin

- 13 blocks across // 18 blocks down
- 234 blocks total

#### Full/ Double

- 16 blocks across // 18 blocks down
- 288 blocks total

#### Queen

- 17 blocks across // 18 blocks down
- 306 blocks total

#### King

- 20 blocks across // 18 blocks down
- 360 blocks total

### HOW MUCH FABRIC DO I NEED TO BUY?

#### QUILT TOP:

Now that you know how many blocks across and down you'll need for your quilt, you can plug it into this [fabric calculator](#)! (When using the fabric calculator, enter 6 for the width and 6 for the height of the block. Fabric width is 45" minimum. If the bolt is bigger than 45" you'll need less fabric, but 45 will be a safe, base estimate.) Once you know how many yards of fabric you need total, divide that Total Yardage number calculated by the fabric calculator by the number of fabrics you are using (See next page for design ideas).

Keep in mind that if you plan to use more of a particular fabric in your design (and not equal amounts of each), that you will need more of that fabric and less of the others, so simply dividing your total yardage by the number of fabrics you are using may not yield correct amounts in all cases!

#### QUILT BACKING:

You will also need fabric for the quilt backing. The backing needs to be **at least** 4 inches larger than your quilt top. So if your quilt top is 60" by 72", your backing piece needs to be 64" x 76" at the minimum. I often purchase my batting and quilt backing after I finish piecing the top so that I can measure and be sure of what I need to buy.

#### QUILT BINDING:

You can make the quilt binding yourself with fabric or buy pre-made binding. If you choose to make it yourself, buy 1 yard of fabric.

ALWAYS round up to the nearest half yard or yard when purchasing fabric! Better to be safe than sorry.

---

### HOW TO DO QUILT BLOCK MATH

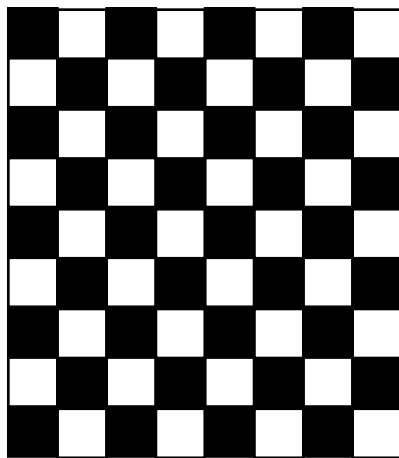
*This is extra information in case you're trying to achieve a more custom size*

You'll be cutting 6-inch square quilt blocks for this project, but you have to account for seam allowances. Seam allowances in a quilt are typically 1/4 inch. So when doing quilt math, keep in mind that 1/2 inch will be eaten in your seam allowances for *each* block length-wise AND height-wise when you sew it together. Therefore, you'll need to add additional blocks to each row as well as additional rows depending on the size of your quilt to make up for the length you'll lose in the seam allowances. (A *seam allowance* is that extra fabric you need when sewing fabric together.)

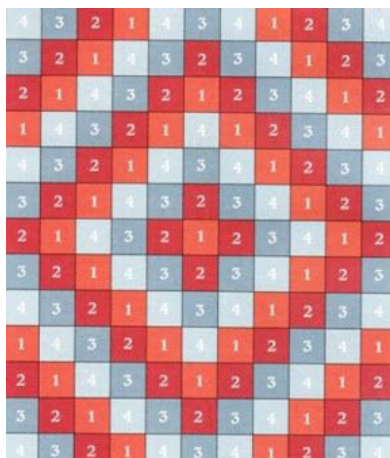
For example, if you want a twin-size quilt, you'll need about 13 blocks wide ( $68/6=11.3$ , always round up [12], and add an extra block for seam allowances [13]!) and 18 blocks tall ( $94/6=15.7$ , always round up [16], and add an extra 2 blocks for seam allowances [18]).

# QUILT TOP DESIGN IDEAS

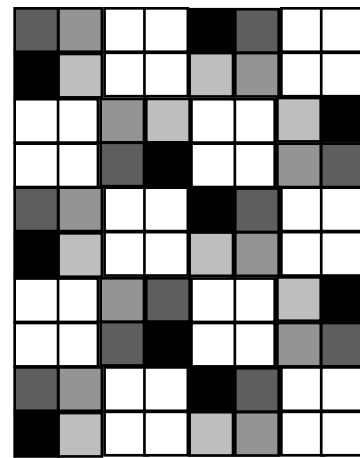
Please note that these blocks are NOT to scale for any size dimensions—They are only for general design inspiration! To determine a specific design for scale, use the coloring sheets provided for standard measurements.



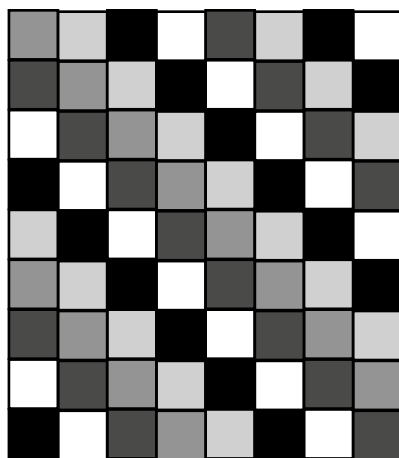
2 colors



4 colors



5 colors  
(this design will require more of one of your fabrics)



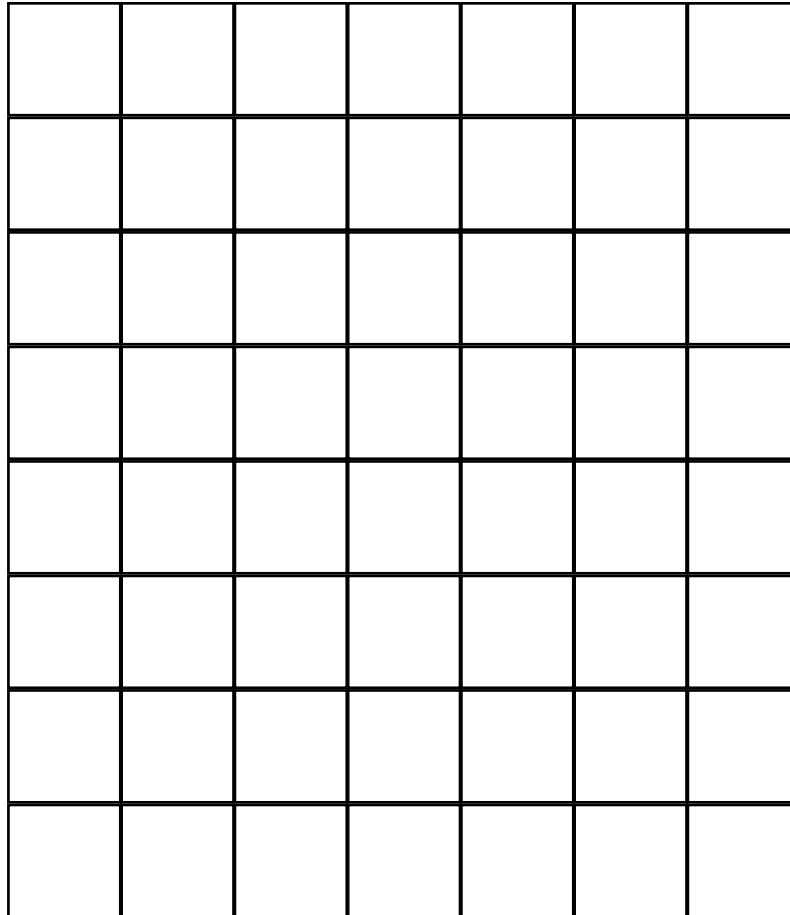
5 colors

Use fabric scraps or LOTS of colors and make a gradient?

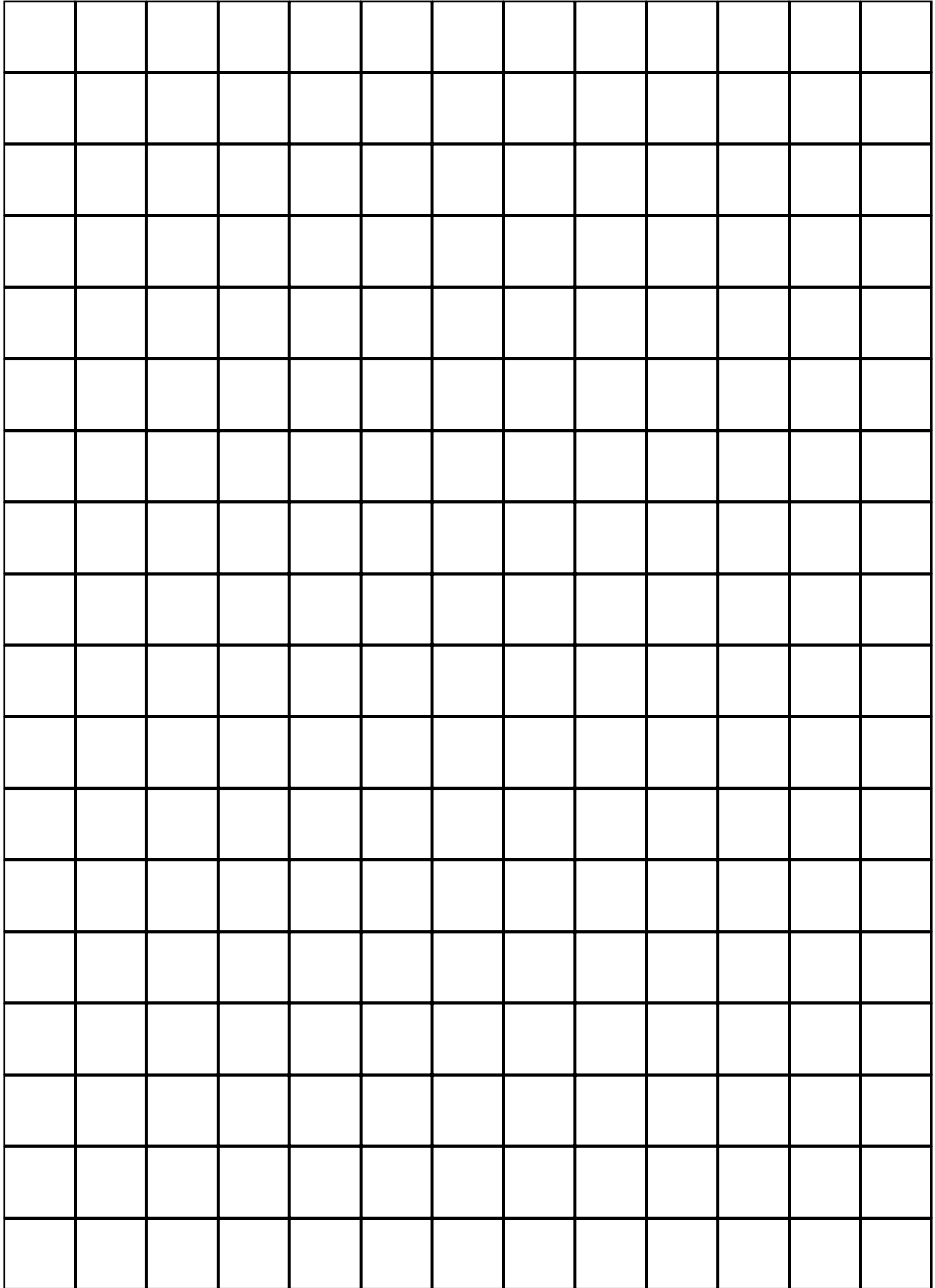
Pick a few fabrics and randomize them?

**Crib COLORING SHEET**

- 7 blocks across // 8 blocks down
- 56 blocks total



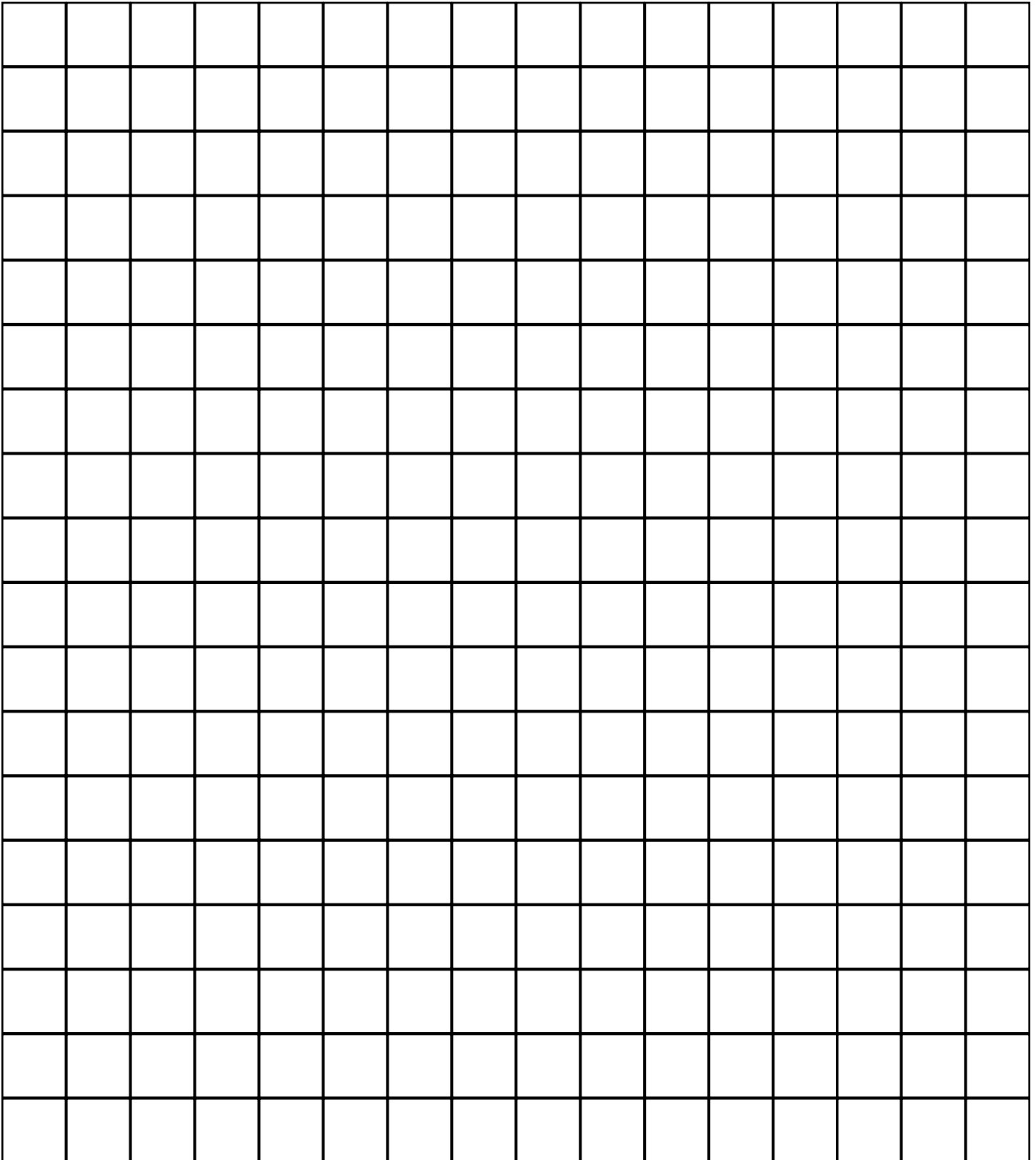
**Twin COLORING SHEET**  
• 13 blocks across // 18 blocks down  
• 234 blocks total



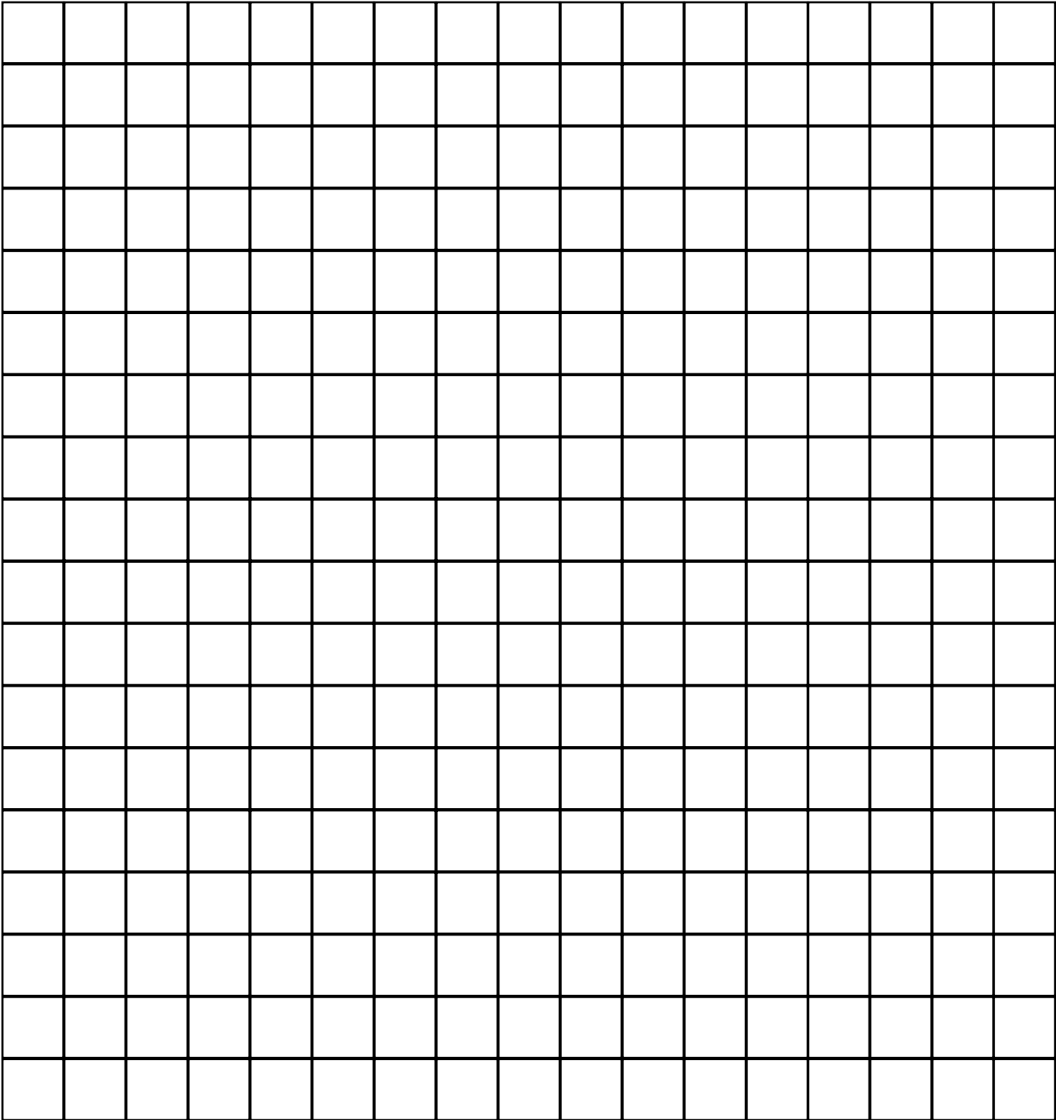
**Full/Double COLORING SHEET**

• 16 blocks across // 18 blocks down

• 288 blocks total



**Queen COLORING SHEET**  
• 17 blocks across // 18 blocks down  
• 306 blocks total





**King COLORING SHEET**  
• 20 blocks across // 18 blocks down  
• 360 blocks total

